

NHS Humber and North Yorkshire Integrated Care Board Organogram Structures

Version 1.0 06-01-23

Introduction 

Introduction

In a letter to Integrated Care Boards (ICBs) dated the 9 December 2022 the Rt Hon Steve Barclay MP (Secretary of State for Health and Social Care) requested all ICBs in England to demonstrate the same level of transparency as the national teams, and asked each ICB to produce an anonymised searchable organogram by **6 January 2022**.

The organogram should show the structure of teams within the ICB, including the number of staff in each team, at each grade and the total cost per team.

It is hoped that this will help the public to understand how ICBs are structured including which roles report to others and will highlight the work that is being carried out to develop integrated care.

Each page in this document contains the information for each of the Directorates within NHS Humber and North Yorkshire ICB. It shows the number of staff in each team as whole time equivalents (WTE) where whole time equates to a minimum of 37.5 hours per week for pay purposes and at each grade and the total cost of team (where available) within that Directorate. The budgeted annual cost for each team includes all employers oncosts including salary, pension & NI contributions and any additional costs. The team cost is the totality of cost funded through the sources of standard running costs and ICB programme funding.

Please note that the information contained in this workbook is correct at the point of publication and may be subject to change.

Organograms 

Context

We are second largest Integrated Care Board in England by land size with a population of 1.7million.

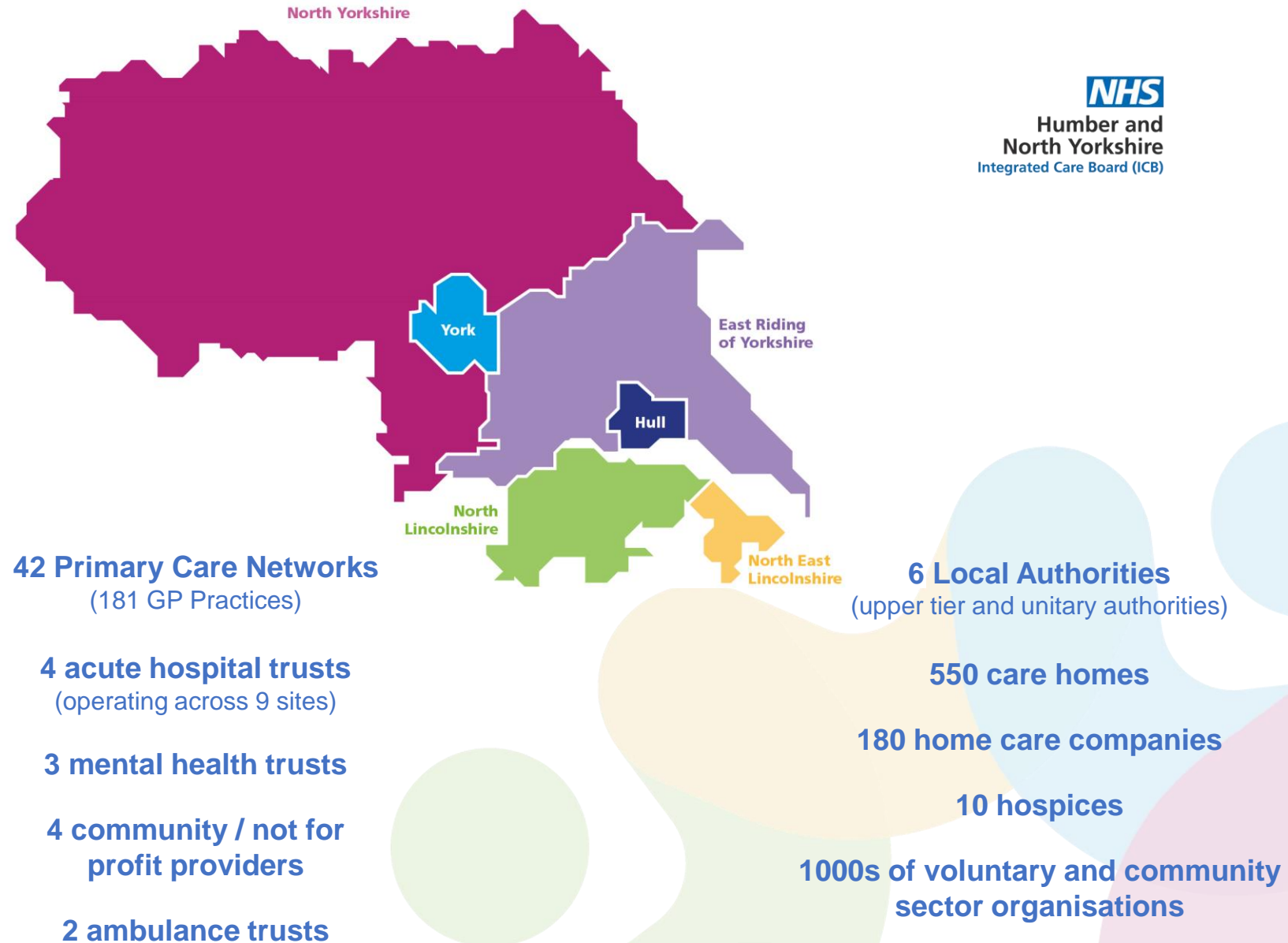
Since July 2022 we have reorganised six clinical commissioning group (CCG) organisations into a single organisation.

Our structures reflect our responsibilities some which are the same as the CCGs plus those new ones; the size of the geography; and our focus on Place.

Our role is to improve outcomes for our population, tackle health inequalities, improve productivity and make the connections between health and wider issues including socio-economic environment.

The total annual costs for the ICB for 2022/23 is forecast to be £3.3 billion. The total annual costs to run the ICB (including staffing costs) are forecast to be £32m which is less than 1% of the total budget.

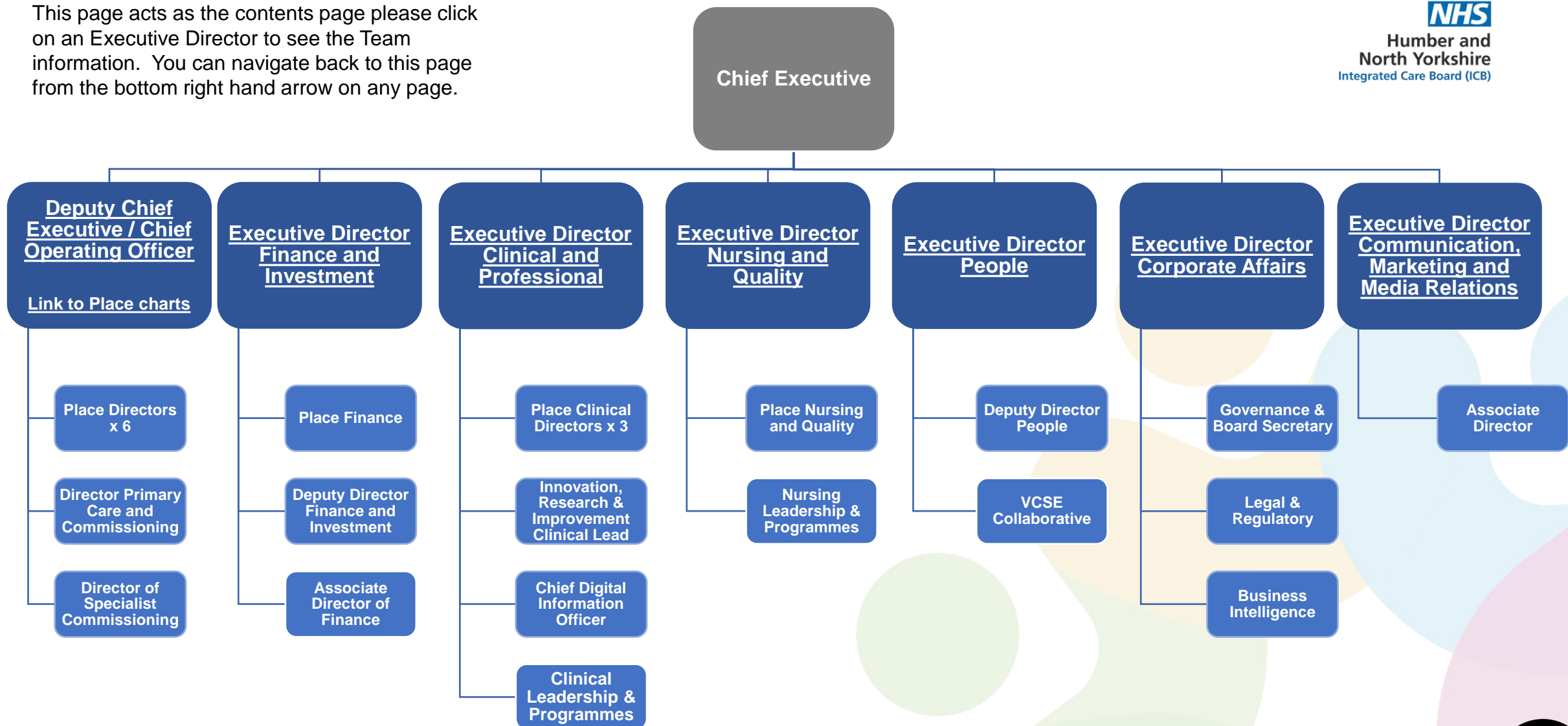
The budgeted costs of the teams when totalled exceeds the running cost above as the teams also include the posts funded from ICB Programme Allocations.



Organograms

Senior Leadership Team

This page acts as the contents page please click on an Executive Director to see the Team information. You can navigate back to this page from the bottom right hand arrow on any page.

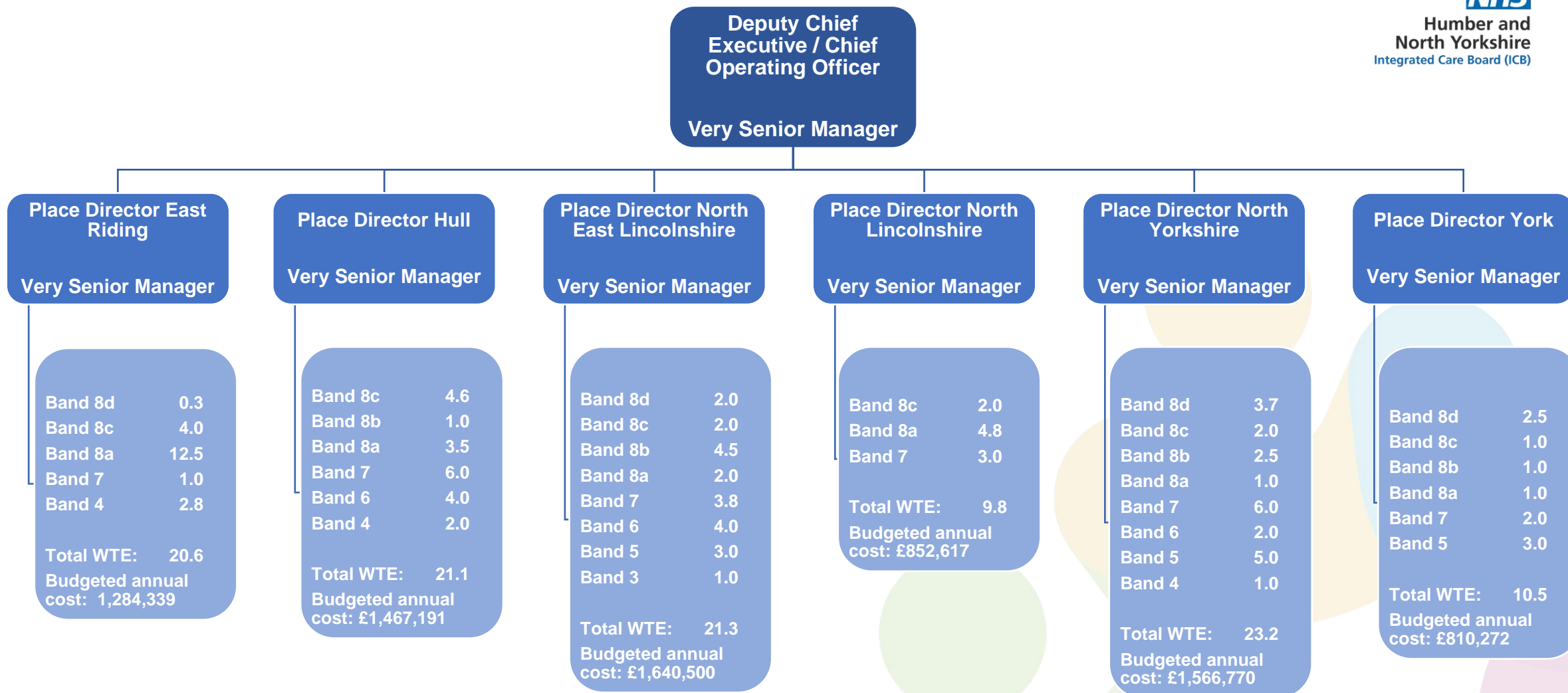


Budgeted annual cost for the Executive Team is £1,868,792
Please note: This also includes the costs for the Chair and Non-Executive Directors.
 The costs for the teams underneath the Executives are on the relevant slides

Back to introduction



Deputy Chief Executive Directorate



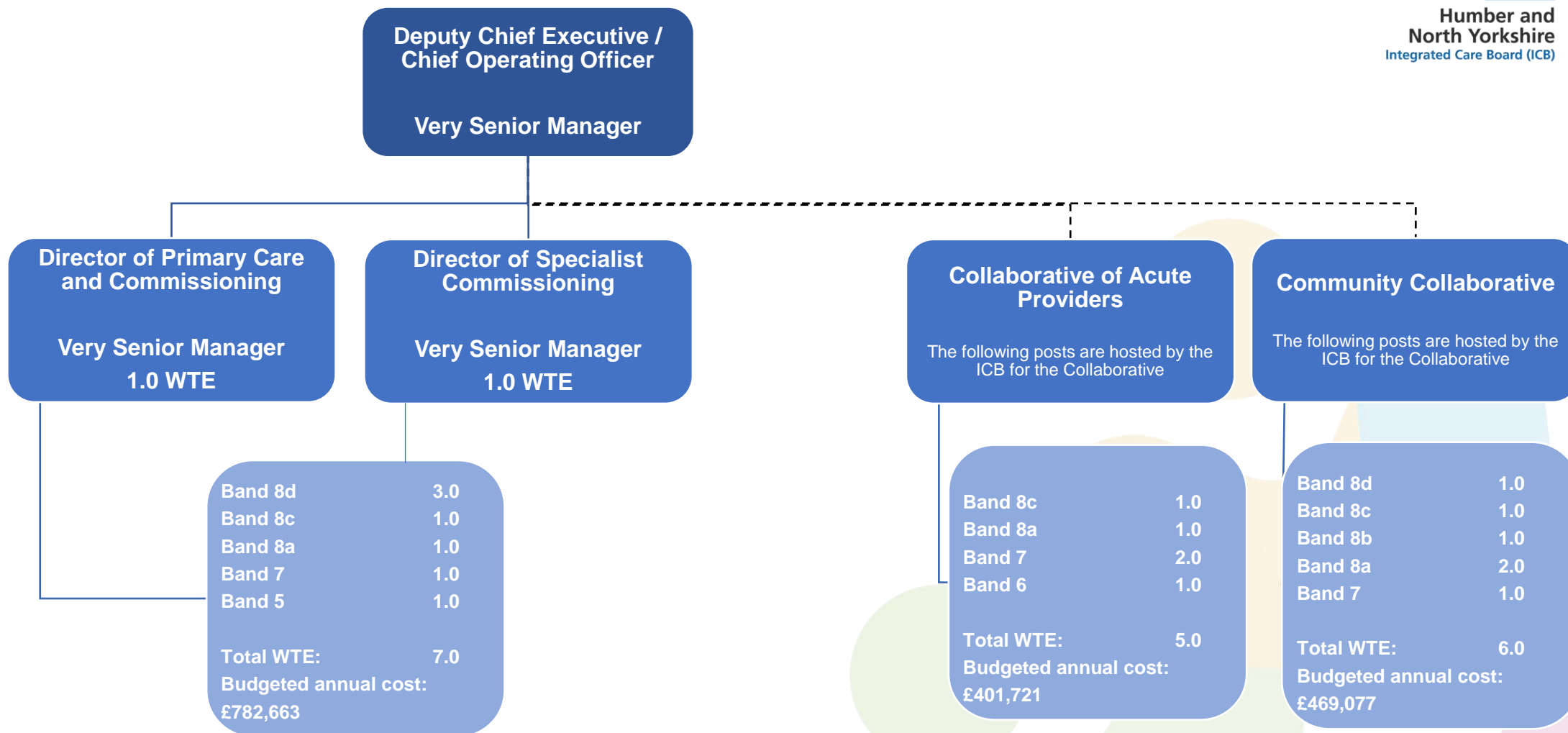
Budgeted annual cost for Place in total: £7,621,689

Please note: There are shared posts between Places and they are hosted by one Place. For North East Lincolnshire there are a number of posts that are shared with the Local Authority

Return to Contents

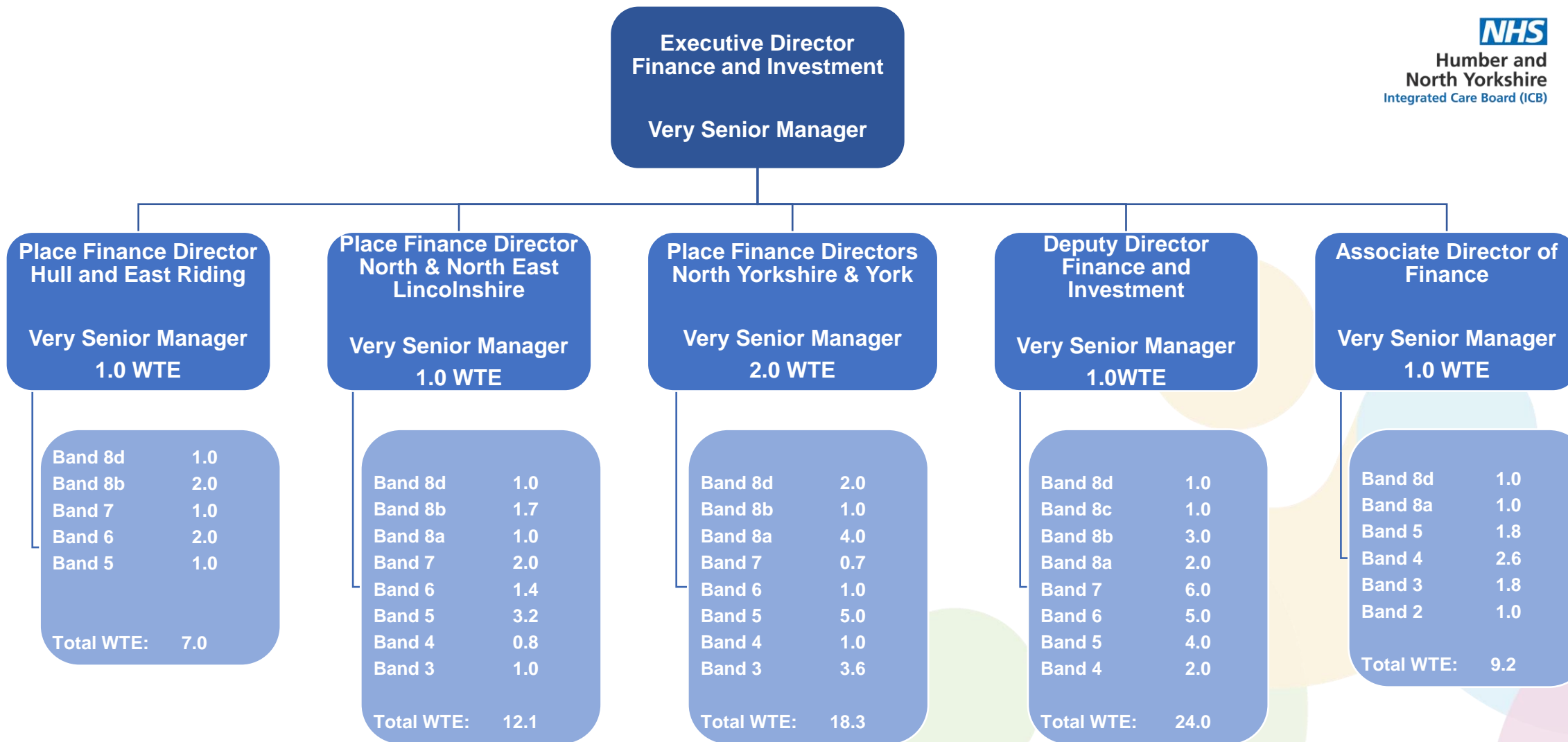


Deputy Chief Executive Directorate



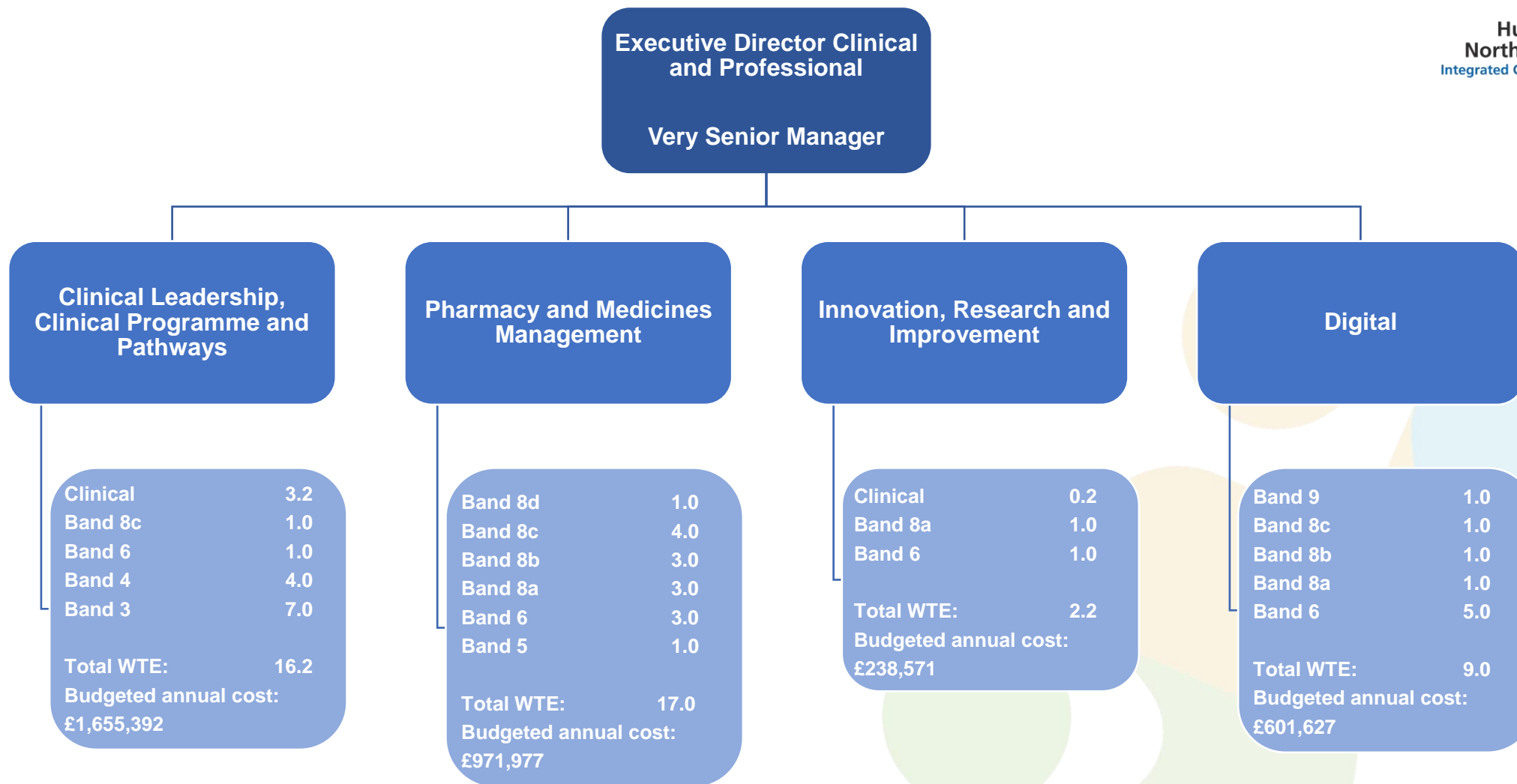
Budgeted annual cost in total: £1,653,461

Finance and Investment Directorate



Budgeted annual cost in total: £4,707,662

Clinical and Professional Directorate



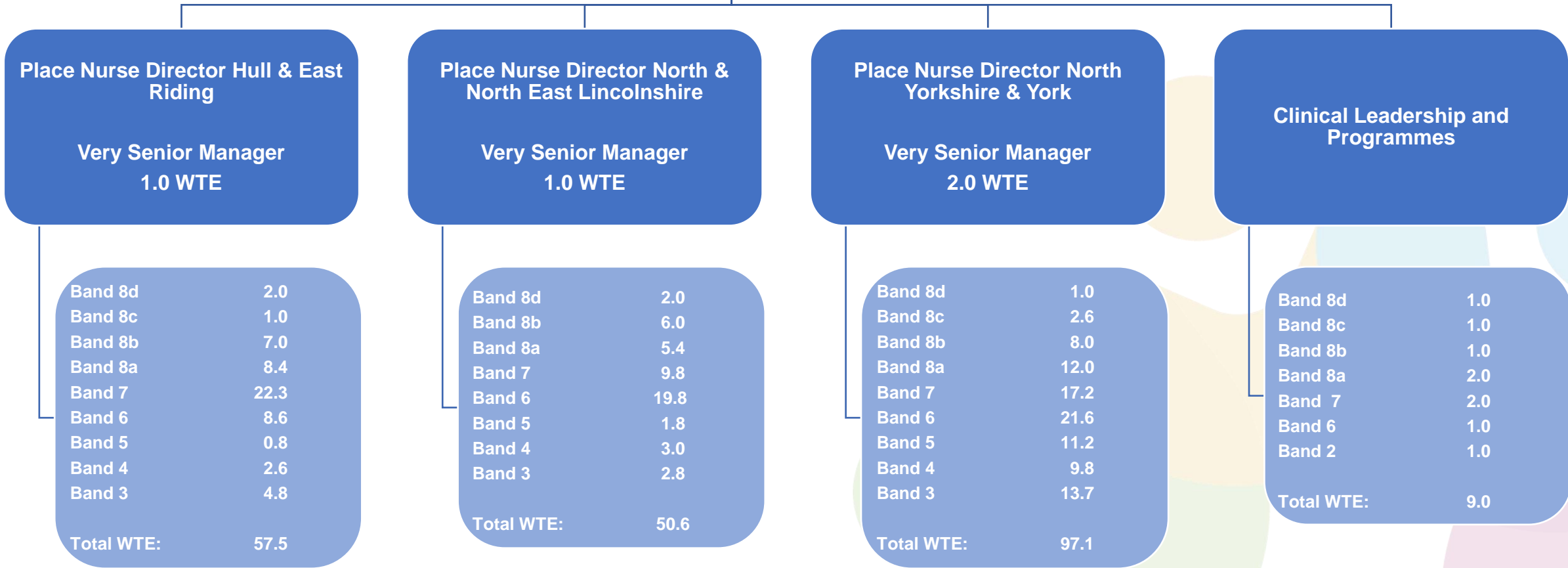
Budgeted annual cost in total: £3,467,567

Return to Contents

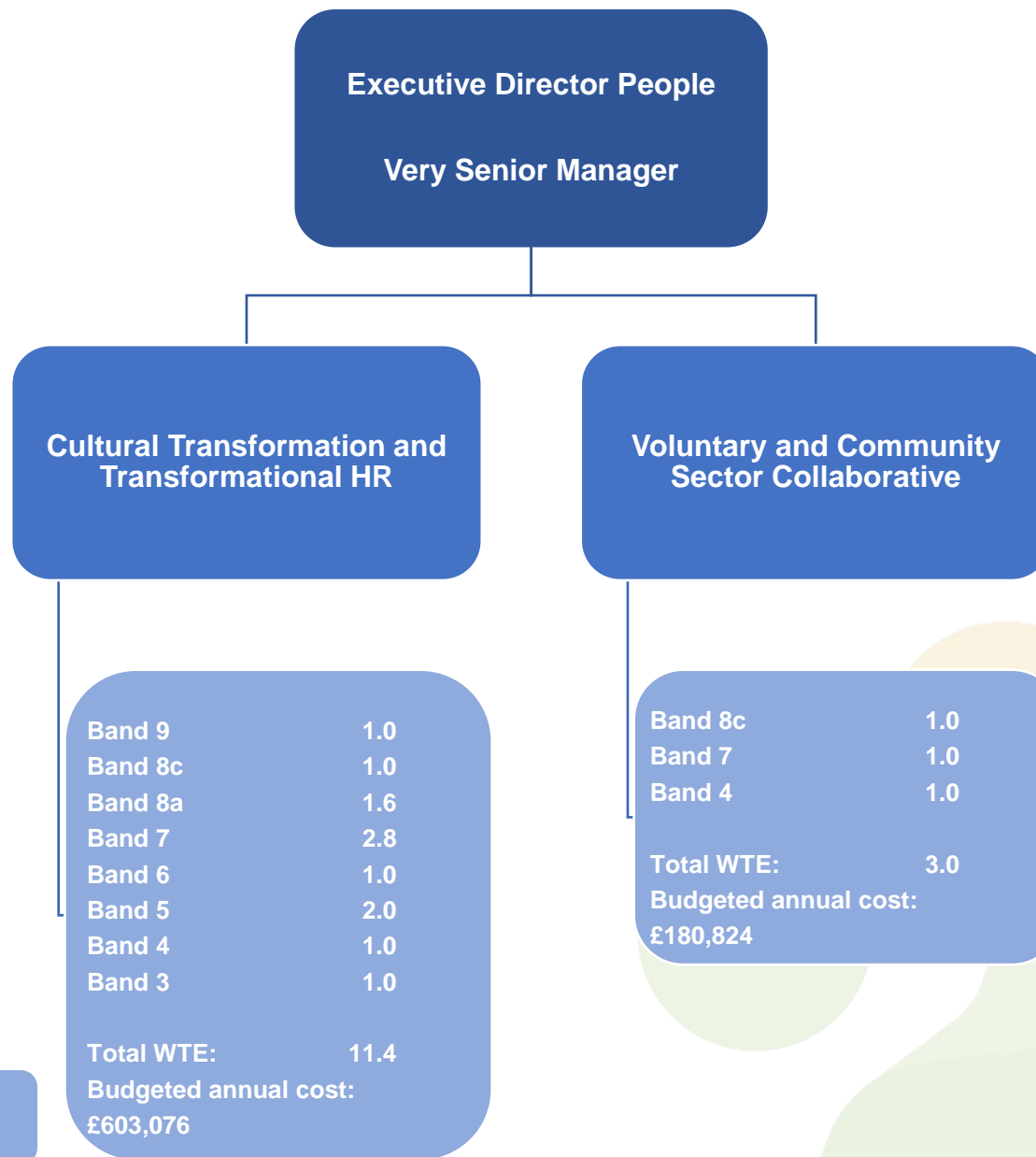


Nursing and Quality Directorate

Executive Director Nursing and Quality
Very Senior Manager

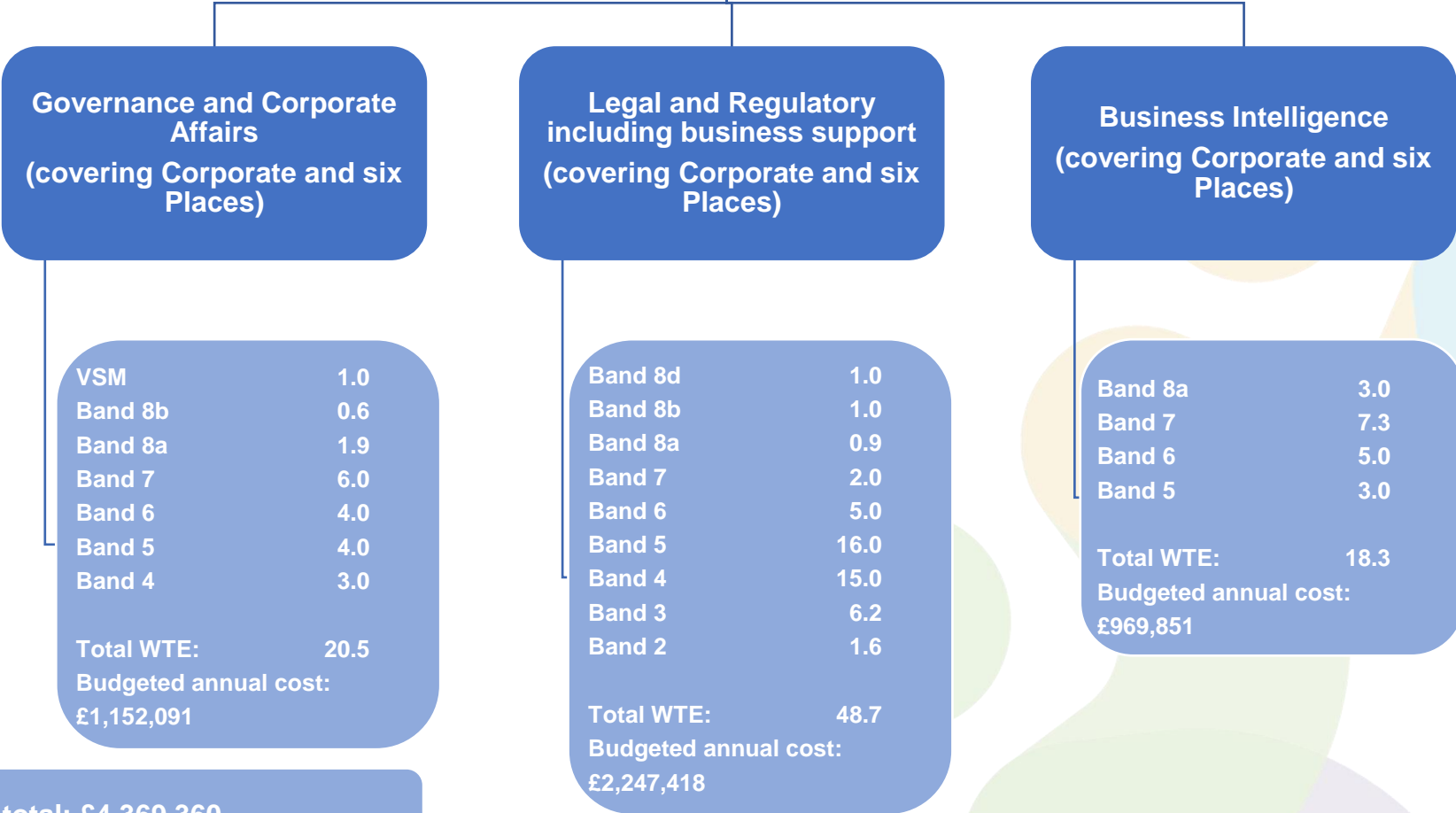


Budgeted annual cost £12,703,485
Please note: The ICB has the Continuing Health Care Team in house. This budgeted cost also includes clinical time for safeguarding and SEND not included in the WTE numbers of the teams.



Budgeted annual cost in total: £783,900

Executive Director Corporate Affairs
Very Senior Manager



Budgeted annual cost in total: £4,369,360

Communications and Engagement Directorate

**Executive Director
Communications, Marketing
& Media Relations**

Very Senior Manager

**Communications, Marketing,
Media Relations and
Engagement
(covering Corporate and six
Places)**

Band 8d	1.0
Band 8b	5.0
Band 8a	3.7
Band 7	9.8
Band 6	5.0
Band 5	3.8
Band 4	4.1
Total WTE:	32.4
Budgeted annual cost:	£1,760,143

Budgeted annual cost in total: £1,760,143