



Humber and North Yorkshire  
Health and Care Partnership

## Stakeholder Bulletin *23 December 2024*

### Latest Updates

Season's Greetings from everyone at Humber and North Yorkshire Health and Care Partnership



As the year draws to a close, I want to take a moment to express my heartfelt thanks on behalf of Humber and North Yorkshire Health and Care Partnership for your support, engagement, and commitment throughout 2024.

This year saw the launch of our refreshed and simplified [Integrated Care Partnership \(ICP\) Strategy](#). This strategy, developed through extensive collaboration with health, care, voluntary, and community partners, sets the direction for how we will work together across Humber and

North Yorkshire. It reflects our shared vision to improve population health, tackle health inequalities, and deliver more integrated care across our communities.

The strategy introduces a new 'golden ambition' to radically improve children's wellbeing, health, and care, recognising that enabling children and young people to start well is key to making a generational change in health outcomes. It also reaffirms our person-centred approach, outlines clear priorities such as preventive care and mental health support, and sets out areas for investment to ensure that people remain at the heart of everything we do.

As we embrace this strategy, I am confident that we can continue in 2025 to build on the progress we have made, delivering high-quality, joined-up care for those who need it most and driving sustainable improvements across our system.

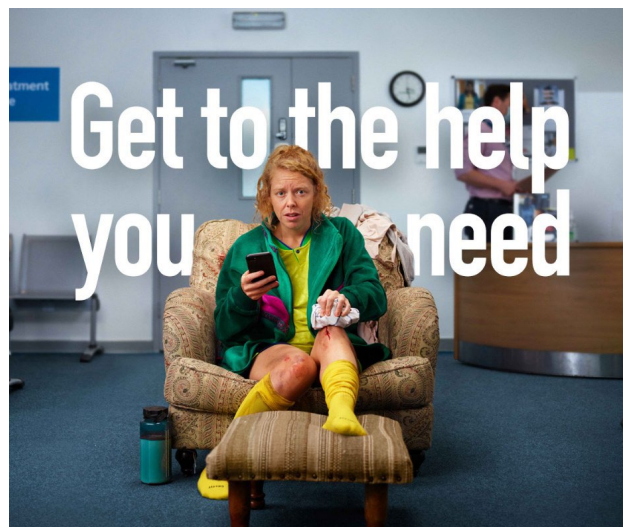
Wishing you a peaceful and joyful Christmas and a New Year filled with health, happiness, and success. May this season bring rest and celebration to you and your loved ones, and I look forward to continuing our important work together in 2025.

Warm regards,

***Sue Symington***

Chair, Humber and North Yorkshire Health and Care Partnership

With hospital Accident and Emergency departments getting busier, NHS urges people to use NHS 111



The NHS in Humber and North Yorkshire is urging people to use NHS 111 to get the medical help they need this winter.

Traditionally the busiest time of the year for the NHS, the increase in demand across health services can put a strain on the local system.

It is estimated that up to [two-fifths of hospital A&E attendances are avoidable or could be better treated elsewhere](#). Using NHS 111 to get the “right care, first time” can help to reduce pressure in A&Es, meaning doctors and nurses can focus on treating those people who are more severely unwell.

NHS Humber and North Yorkshire Integrated Care Board (ICB) is repeating long-standing NHS advice for people to use 999 or A&E services for life-threatening emergencies and serious injuries, and to otherwise “get to the help they need” by accessing NHS 111 over the phone, [online](#) or via the NHS App.

Highly trained advisors at NHS 111 will assess and direct people to the most appropriate local service, including hospital urgent treatment centres, GP practices, and consultations with a pharmacist. If needed, staff can also arrange a call back from a nurse, doctor or paramedic.

[Click here](#) to read more.

### GP surgery team win national award



A GP surgery in East Yorkshire has won a national award for their work to support patients with Chronic Obstructive Pulmonary Disease (COPD).

The Ridings Medical Group in Brough were named the winners of the Clinical Improvement (Long-term Conditions) Award at the GP Awards 2024 in London earlier this month for their RESPIRE programme.

The programme involves multidisciplinary group-based education and self-management intervention for patients with COPD, designed to support patients in preparing for winter. This work has high patient satisfaction and led to several positive outcomes, including a significant reduction in COPD exacerbations, hospital admissions and GP attendance.

## Get Involved

### NHS England North East and Yorkshire Advanced Practice Application 2025-26



The application process for organisations within North East and Yorkshire to apply for NHS England support to train advanced practitioners in 2025-26 has now opened.

#### Key Points:

- The [North East & Yorkshire Faculty Handbook](#) contains details about the funding offer from NHS England, employers' responsibilities/commitments and how to apply. If after reading these you still have questions, please email [england.neyadvancedpractice@nhs.net](mailto:england.neyadvancedpractice@nhs.net).
- Please note the document is a live document and may have updates added as and when.
- The deadline to apply is **Friday 28 March 2025** (dependent on numbers received).
- Each organisation applying must nominate a single contact to lead the Advanced Practitioner process and act as a key liaison for all enquiries relating to Advanced Practitioners. All applications must be approved and submitted by the same lead contact.
- You will be required to submit a job description and/or job plan for your trainee Advanced Practitioner(s) upon applying, to ensure your application is considered. Please note, applications that are not completed in full or do not provide a JD/PS will be returned.
- If you require any support completing the form or have any issues accessing the form, please email [england.neyadvancedpractice@nhs.net](mailto:england.neyadvancedpractice@nhs.net).

- NHS England aims to notify your organisation of the outcome within 6 weeks of submitting your full application.
- Please note once funding is confirmed, organisations need to apply to their preferred HEI and follow their application process.

More information on the offer, including details of the training grant, can be found in the [North East and Yorkshire Faculty for Advancing Practice handbook](#) as well as [the clinical salary support guidance](#).

If you are a large organisation that will be submitting multiple applications and would prefer to submit your applications via a secure live spreadsheet, please let us know by emailing [england.neyadvancedpractice@nhs.net](mailto:england.neyadvancedpractice@nhs.net).

[Click here](#) to apply for the NHS England Advanced Practitioner support. Applications are open until **Friday 28 March 2025**.

[Exciting new talent programme for international educated colleagues launching across Humber and North Yorkshire](#)

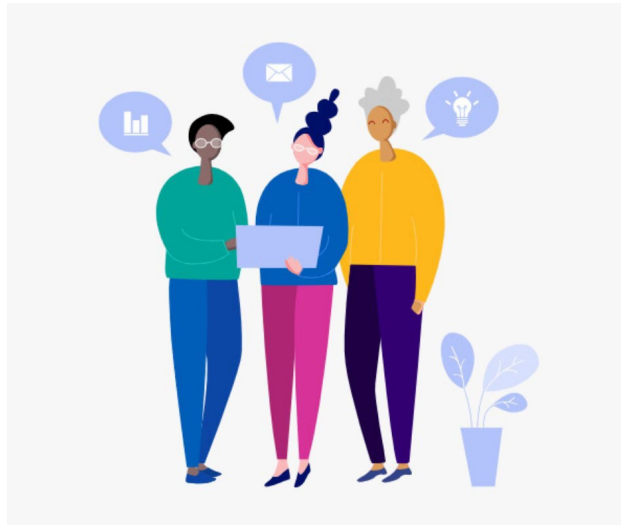


Humber and North Yorkshire Health and Care Partnership is excited to announce a new talent programme, ***Advancing International Talent***, specifically designed to support internationally educated colleagues across our region.

Your experiences and expertise are invaluable in shaping the programme to reflect the unique needs of our diverse workforce. The Partnership is interested in hearing from people who have trained and worked in health and care in another country and have since moved to England to understand how career development resources and support can be improved.

[Click here](#) to complete the survey.

## National Cancer Patient Experience Survey 2024



In the NHS, we want our patients to have the best experience possible and having continuous patient feedback is crucial in helping us to deliver what patients want and need.

The National Cancer Patient Experience Survey (NCPES) asks for feedback from cancer patients (16 years and over), to inform and improve local cancer services across England. Those who were treated for cancer as an inpatient or day-case, and left hospital in April, May or June 2024, will be invited to take part in the survey.

The NHS and cancer charities use the results to understand what is working well and which areas need improvement. The results enable them to identify national and local priorities and work with patients and partners to deliver change. The 2024 CPES fieldwork will begin in mid-November 2024, with results available next year.

[Click here](#) for more information and to complete the survey.

## News from Across the Partnership

### Patients hold the key to healthcare research



Hospital staff across the Humber region have spent the year at the forefront of clinical research.

As 2024 draws to a close, research and development teams working for NHS Humber Health Partnership have worked on more than 650 individual health research studies this year.

Over 4,700 patients and users of the group's health services across East Yorkshire and Northern Lincolnshire agreed to take part in research across 27 specialities this year, including cardiovascular disease, obesity, respiratory diseases, cancer, kidney disease, digestive diseases, diabetes, infectious diseases and vascular disease.

One of the most popular studies over the past 12 months has been the Born and Bred in (BaBi) study. This study uses data which is already held about local people to shape family health services and highlight societal changes which could improve long-term health outcomes for children and families.

[Click here](#) to read more.

## Grimsby Alcohol Care Team urges caution over 'Dry January'



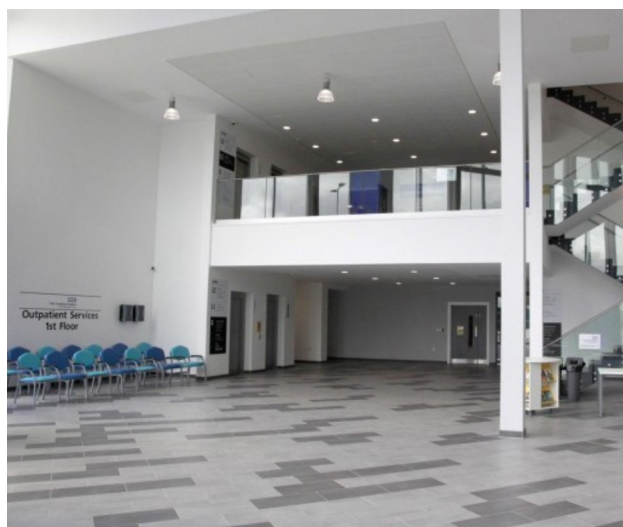
Coming under pressure from your family and friends to use Dry January to tackle your drinking?

While thousands of people are preparing to use Dry January to take a break from alcohol after the festive season, it can be dangerous for some people to stop drinking without professional support.

Grimsby's Alcohol Care Team, based at Diana, Princess of Wales Hospital, is warning those dependent on alcohol can risk serious health complications if they take part in Dry January without professional support and advice.

[Click here](#) to read more.

## New clinic for sight loss patients



A new clinic for sight loss patients has opened at the LNER Community Stadium, York.



The new service is delivered by MySight York, a local registered charity, in partnership with York and Scarborough Teaching Hospitals NHS Foundation Trust, who already operate the existing Eye (Ophthalmology) Department at the stadium.

Patients who require treatment and follow-up for age-related macular degeneration (AMD), as well as intravitreal therapy, attend the eye department for regular appointments. The eye department currently manages approximately 2,000 eye appointments every month, but with an aging population, the demand for eye care services is expected to grow.

With the support of MySight York's services, the department will be able to support an additional 600 new patients a year. They will also be able to access comprehensive support services designed to improve their quality of life and live well with sight loss.

[Click here](#) to read more.

## Stay Up to Date

Visit [our website](#) or follow us on social media (**@HNYPartnership**) to get the latest news and information from the Partnership.

Do you have a story, event or update you would like to be featured in a future bulletin? Please share it with [hnyicb.communications@nhs.net](mailto:hnyicb.communications@nhs.net).

If you have been forwarded this bulletin, you can [complete our online form](#) to receive it direct to your inbox every week.