



Humber and North Yorkshire
Health and Care Partnership



Humber and
North Yorkshire
Integrated Care Board (ICB)

NHS Humber and North Yorkshire Integrated Care Board

Functions and Decision Map (including governance structure)

v7: updated July 2025

Humber and North Yorkshire: Functions and Decisions Map

Integrated Care Partnership (ICP)

Key role and responsibilities are to:

- Develop and agree an **integrated care strategy** across Humber and North Yorkshire
- Make recommendations to the ICB on delivery of integrated care strategy
- Have **oversight** of delivery of the integrated care strategy
- Work effectively, collaboratively with partners and to have **shared accountability**.

Membership: ICB Independent Chair, Representatives from the ICB, Local Authorities, Healthwatch, and other partner organisations.

Strategy

Integrated Care Board (ICB)

Key role and responsibilities are to:

- Develop and agree a **5-year delivery plan** that reflect the integrated care strategy
- Discharge the functions of an ICB including the accountability for **NHS spend and performance**
- Hold the executive to account for financial and operational objectives delivery
- Create an environment and conditions for **effective partnership working**

Membership: Independent Chair, Chief Executive, Executive Directors, Non-Executive Directors, and members selected from nominations made by Trusts, Local Authorities and General Practice, VCSE and HealthWatch

Delegation

Assurance

Integrated Care Board Committees

Provide the Integrated Care Board with assurance about specific functions e.g., Audit, Risk, Remuneration, Quality, Performance, Finance

Sector Collaboratives

Sector Collaboratives will deliver key responsibilities agreed with the ICB where it makes sense to work together across Humber and North Yorkshire to meet the needs of the population.

Strategy

Delegation

Accountability

Health and Wellbeing Boards (HWBB)



Key role and responsibilities are to:

- Agree the **Joint Strategic Needs Assessment** and the Joint Health and Wellbeing Strategy for their Place
- Encourage the organisations that are responsible for commissioning health or social care services to work together and to work closely with the Board;

A partnership between each Local Authority and 'place': York, East Riding, Hull, North Lincs, North East Lincs and North Yorkshire.

Strategy

Place Committees of the ICB

Key Role and Responsibilities are to:

- Deliver integration and service transformation in line with Place priorities and as required to deliver outcomes for the population
- Address health inequalities at a Place level

Membership: Place Chief Executive Lead, NHS Place based directors, NHS, public health, social care, local health and care providers, VCSE, HealthWatch

Delegation

Assurance

Place-based committees of the ICB

Provide the Place Committee with assurance about place delegated functions e.g. Quality, Finance

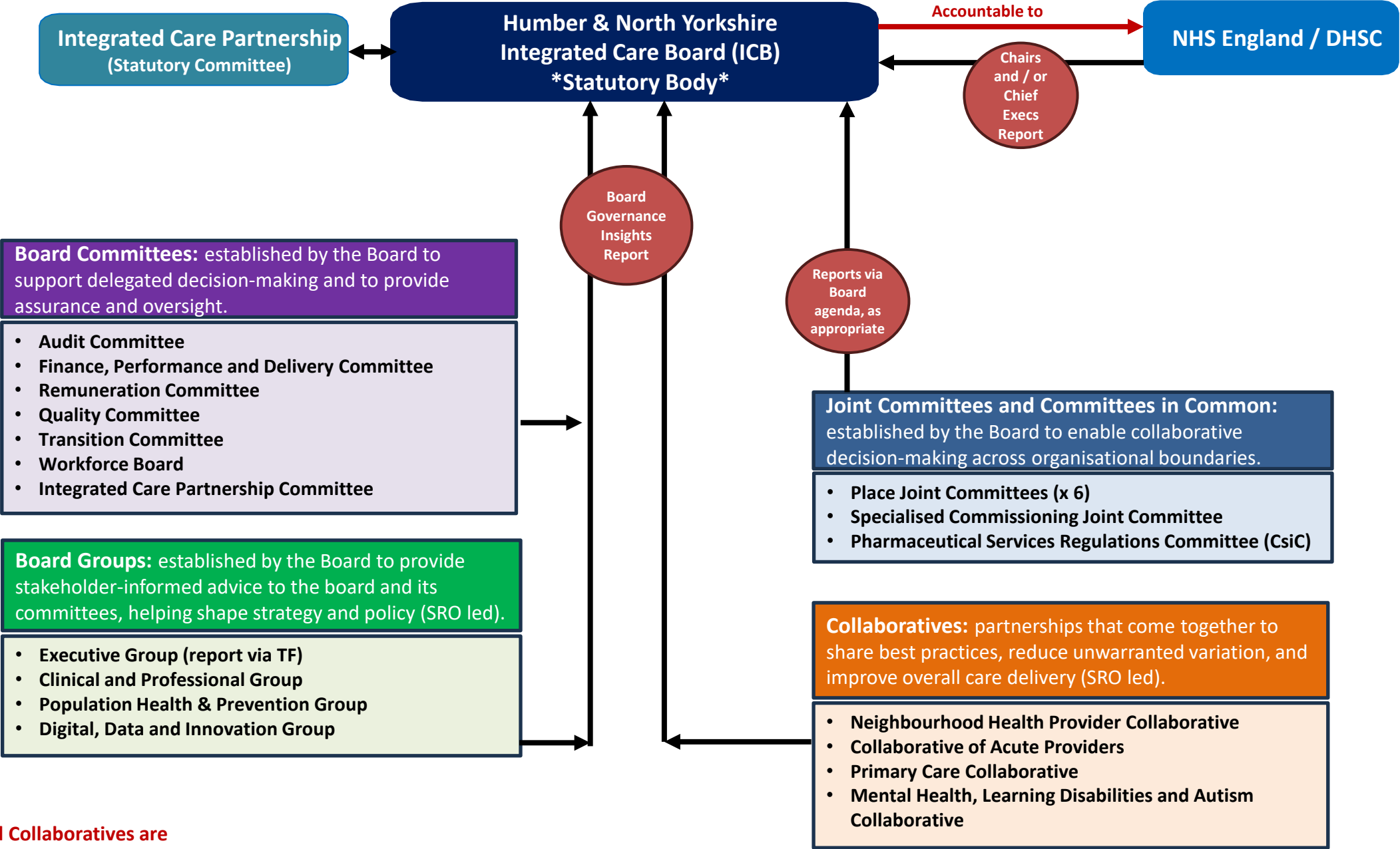
Provider Partnerships

Provider Partnerships will collaborate to deliver plans that transform services to meet the needs of the population in a specific place

Agreements

Agreements

Humber and North
Yorkshire ICB:
DRAFT Governance
and Reporting
Structure
(July to approx.
December)



Committees, Groups and Collaboratives are
Connected through Chairs and Exec Leads / SROs